

## WOOMERA RUNWAY



TEST CAR



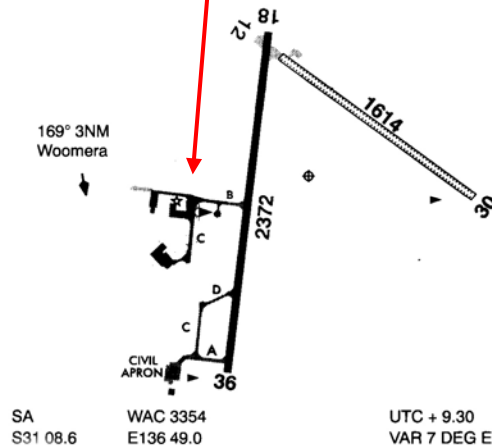
HANGAR 2

OFFICES



WOOMERA  
AVFAX CODE 5104

ELEV 548



Woomera Runway Slope 0.14% down to North. Sealed length 2432m

Runway runoff is smooth packed gravel

**SOUTHERN HEMISPHERE FIELD TESTING OF AUTOMOTIVE SYSTEMS AND COMPONENTS**

[www.test-trak.com](http://www.test-trak.com)

Liskibrae Pty Ltd. ARBN 69 079 003 857 trading as Test-Trak ABN B1572982N